

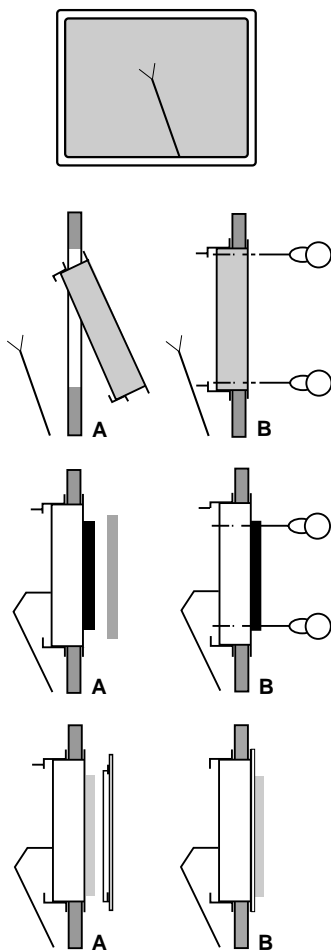


IMPORTANT – DO NOT THROW THIS AWAY

Mounting Template for FMK-1 Flush-Mount Kit

THE PERFORATED INNER LINE ON THE TEMPLATE MEASURES 9-3/8" X 11-5/8" AND IS THE SIZE OF THE HOLE NEEDED TO MOUNT THE FRAME. THE OUTSIDE OF THE CARD IS THE SIZE OF THE BEZEL – USE IT TO POSITION AND CUT THE HOLE.

Please Note the molded bezel that mounts in front of this frame measures 11" x 12-1/2", so allow at least 1" clearance around the hole you cut to allow for the bezel.



1. Cut hole and locate cable.

2. Locate the thicker, long side of the frame onto the upper edge of hole, swing the frame into the hole and allow the frame to drop down and locate onto the lower long edge of hole. Tighten 4 x S/T screws to clamp drywall or ceiling panel.

3. Connect cable, remove grille and insert speaker. Ensure that the 4 x corner holes on the black loudspeaker baffle are cleaned out and fix using the 4 x S/T screws supplied onto the steel frame. Ensure the speaker and frame do not rattle – do not overtighten. Replace grille.

4. Remove backing film from S/A pads on rear of bezel and locate over the grille, ensuring that the pads make good contact with the lip of the steel frame, and press home.

Parts supplied in this mounting kit:

Card template

Assembled steel frame x 2 (zinc coated steel)

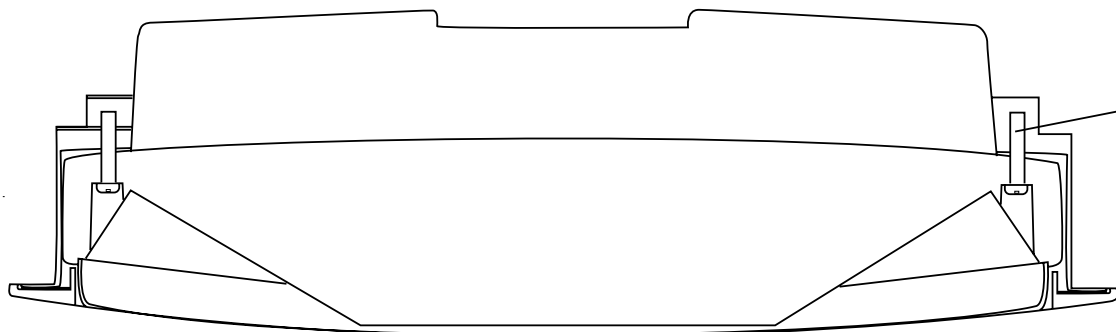
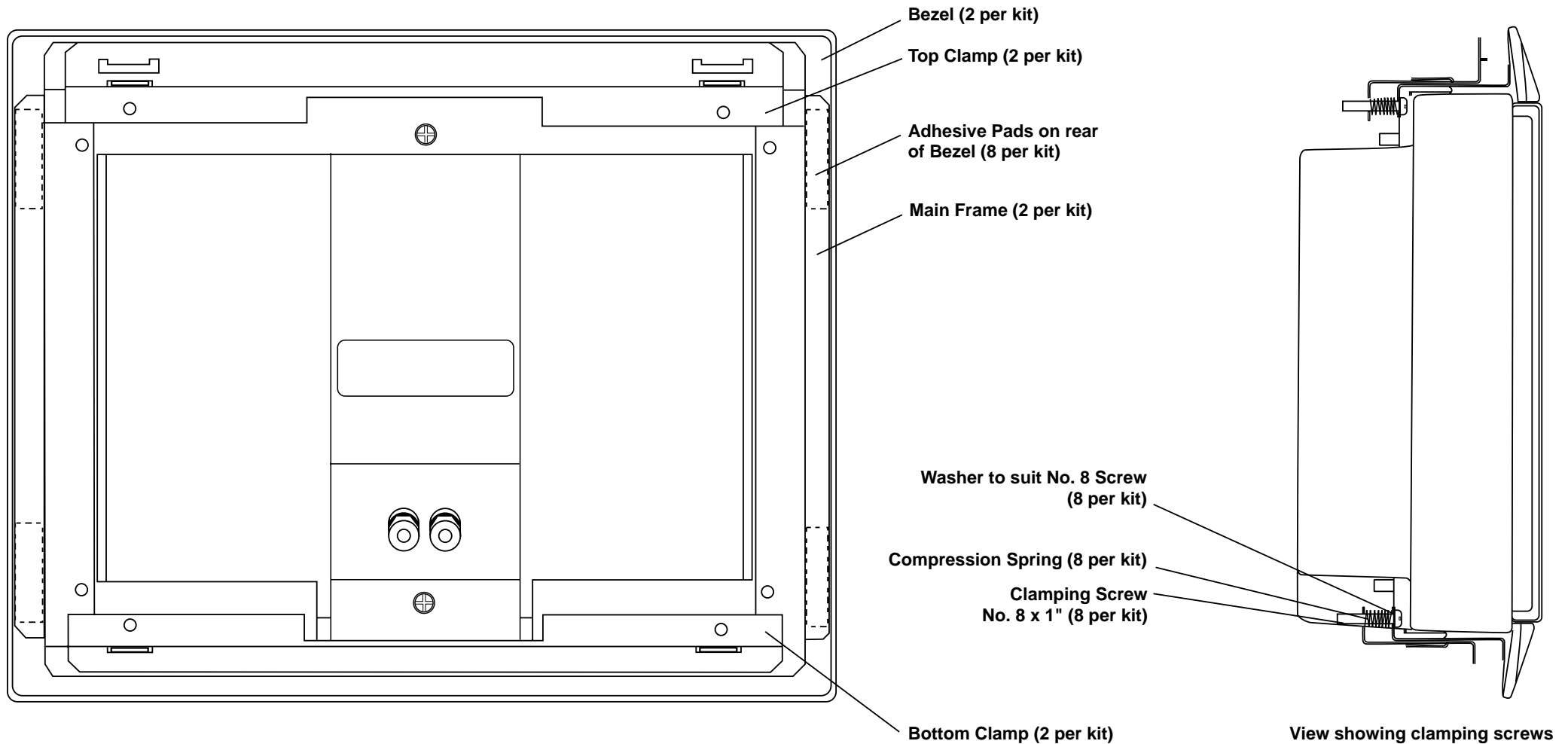
Mounting bezel x 2 (paintable ABS) fitted with S/A pads

Loudspeaker fixing screws x 4

Parts list drawing with mounting instructions

FMK-1 Flush-Mount Kit Parts List Drawing

View showing rear of speaker with flush-mount kit in position



View showing speaker fixing screws

Speaker Fixing Screw
No. 8 x 1" (8 per kit)
[16 No. 8 Screws total in kit]